

SLA's Diverse Faculty & Staff

By: Dinah, Fanta, and Maya



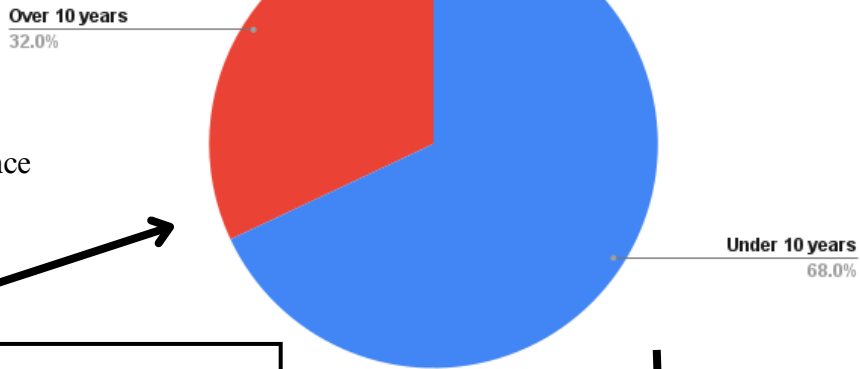
Key Idea

SLA's teachers - whether experienced or new to the school - are one of the main variables that make SLA a diverse, unique and supportive school.

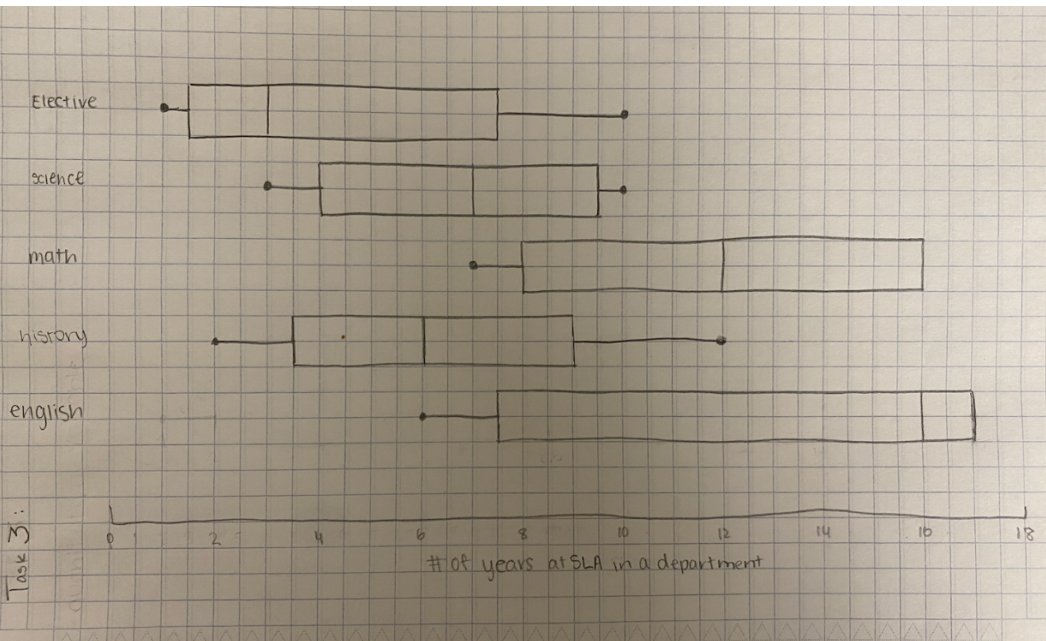
Teacher Tenure at SLA

Department Experience

- New Academic Staff = Frequent new benchmark projects
- Consistent Academic Staff = More in field experience of teaching
- Most teachers are on the newer side



Teacher Tenure at SLA	Frequency	Relative Frequency
17	17/25	68%
8	8/25	32%

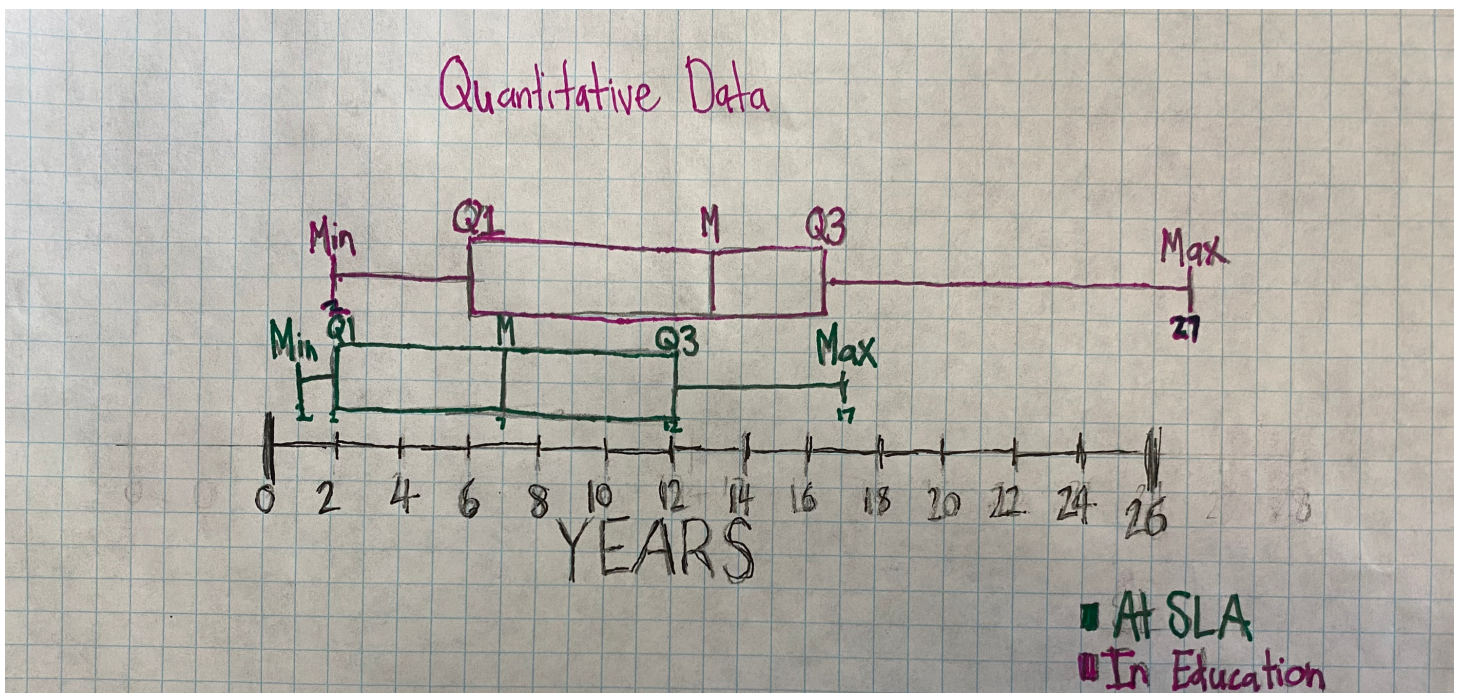


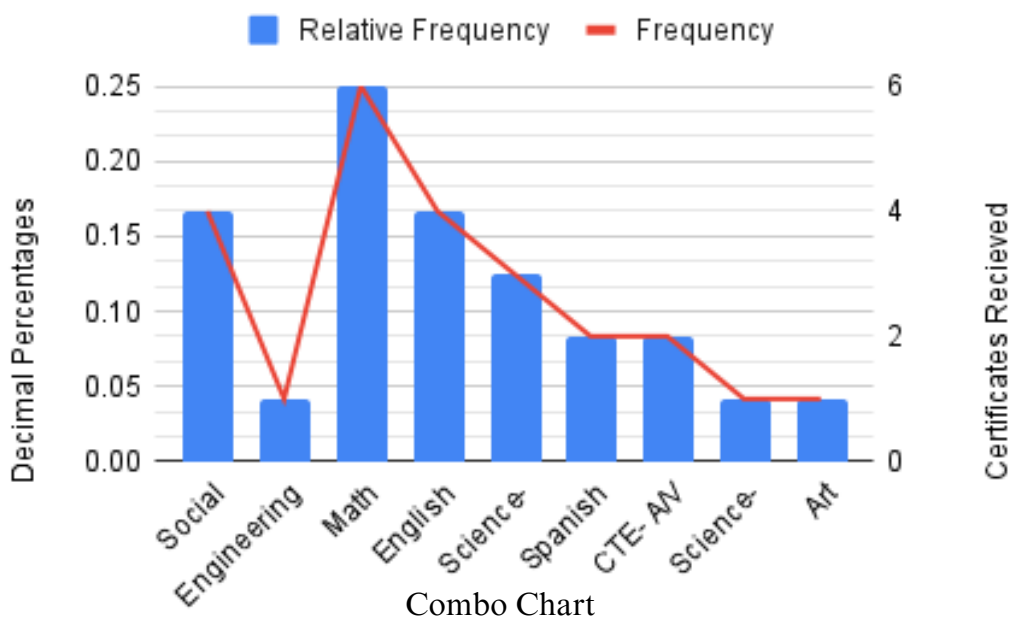
- Teachers in the English and Math department have the longest tenure, the mean is 11 to 13 years, the range is 9 years at SLA, the median amount of time at SLA is 12 (math) and 16 (english) years.
- Teachers from the remaining departments, including electives have an average tenure of 4 to 8 years, the range is 7 and 10 at SLA, and the median amount of time at SLA is 5 (elective), 6 (history), 7 (science). (see chart for results of each department)

Visual Chart/Graph & 5 Number Summary (All Staff)

There are new and long term staff that attend SLA everyday

- The IQR for these two sets of data are both IQR = 11
- The data displayed here is measured by years (time is continuous)
- There is an acceptable amount of time where staff has pursued their degree in professional settings.



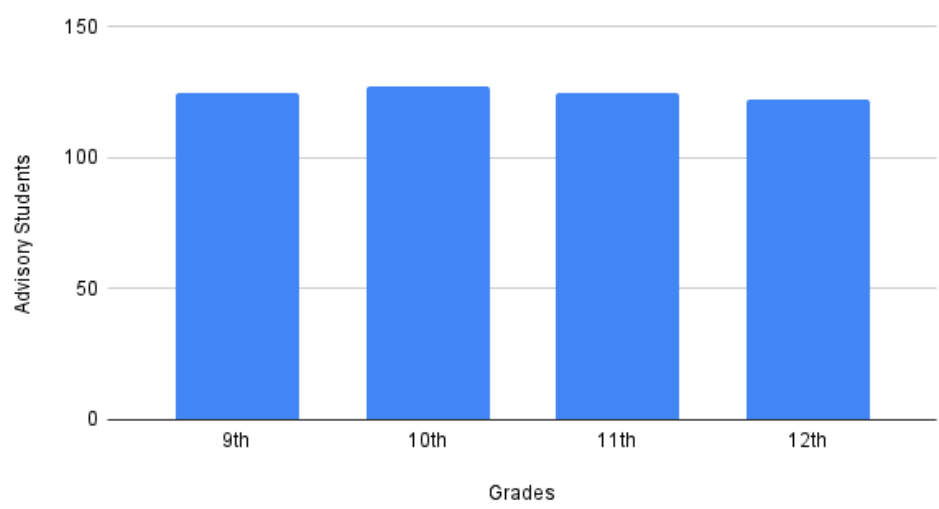


- The data skewed to the right and is bimodal and has no gaps!

First Certificate	Relative Frequency	Frequency
Social studies	0.166666667	4
Engineering	0.0416666667	1
Math	0.25	6
English	0.166666667	4
Science-Biology	0.125	3
Spanish	0.0833333333	2
CTE- A/V Communication Tech	0.0833333333	2
Science- Physics	0.0416666667	1
Art	0.0416666667	1

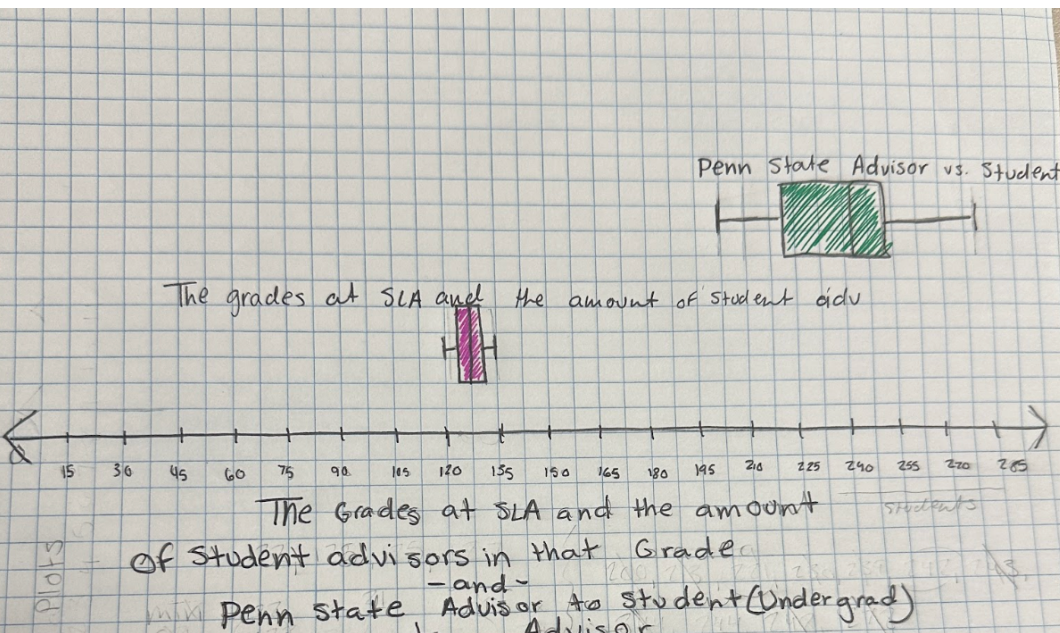
Advisory Students Per Grade

Advisory Students vs. Grades



Advisory, is one of the main aspects of SLA

- Other institutions there are 200 students assigned one advisor
- SLA assigning one advisor to every 21 students.
- Grade:
 - The minimum = 120
 - the maximum is 135.



- Penn State and their advisor-to-student ratio, with undergraduates the Q1 is 221 and Q3 is 244.
- College advisors are less interactive with students
- Each SLA teacher offers a unique opportunity to build relationships with their advisees.
- SLA teachers prioritize their relationships with students as it helps students with their education pathway