

Kingston, Tennessee Coal Ash Spill

What Happened

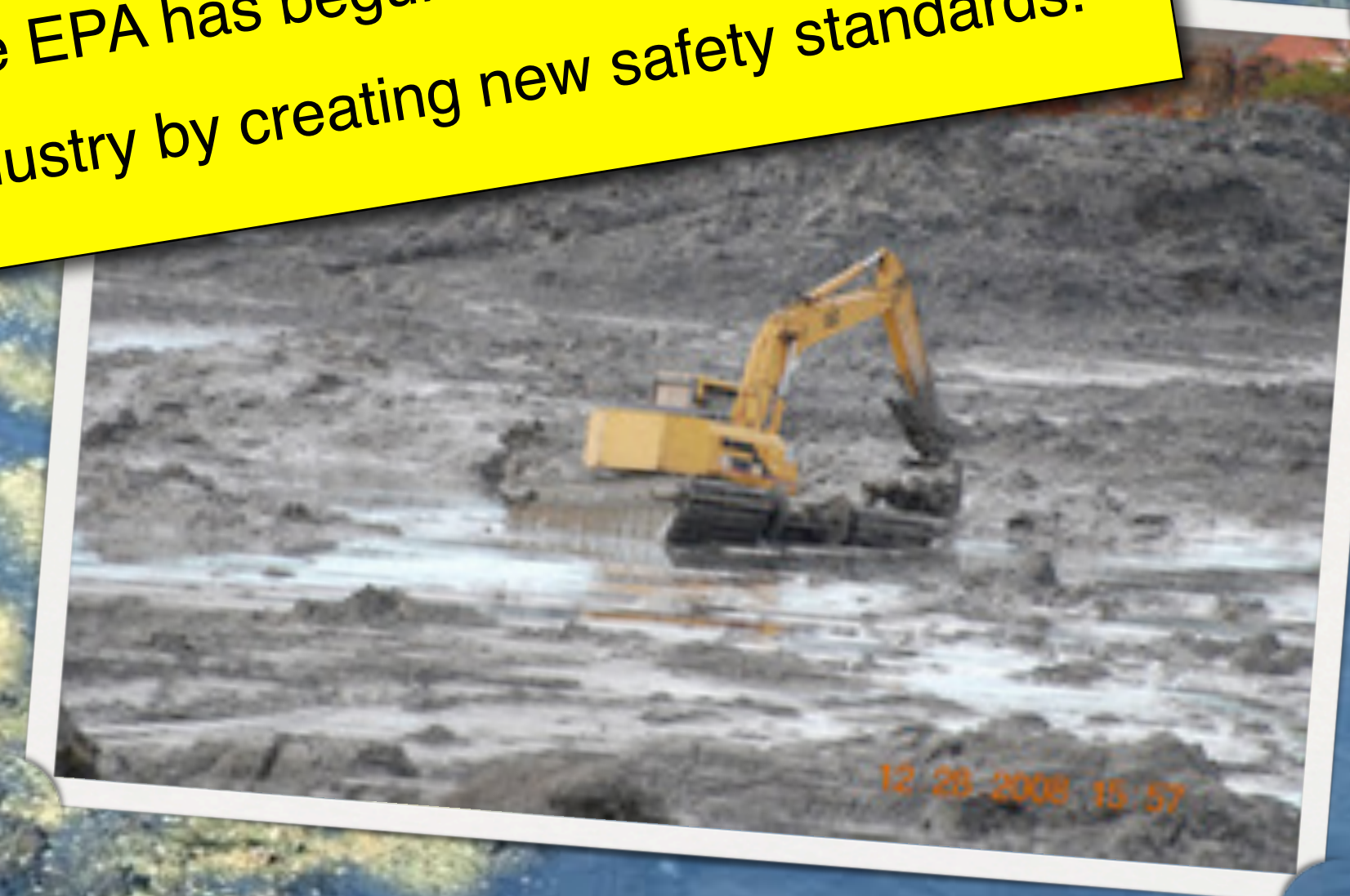
On December 28, 2008, a wall supporting the ash pond broke, spilling toxic ash (including lead, barium, and chromium) into surrounding rivers and land.

How Coal Ash is Produced

1. Coal is Burnt to Heat Water
2. Water ---> Steam and Spins a Turbine
3. Ash from Boiler and Exhaust is Removed and Placed in Ash Pond

Government's Response

The EPA has begun to regulate the coal industry by creating new safety standards.



How Dangerous? The toxic radiation that was caused by exposure to the sludge was considered to be greater than exposure to a nuclear plant.

How Much? 5.4 Million Cubic Yards.

That's enough sludge to fill *The Gallery (I and II)*, *The Shops at Liberty Place*, Market East Station, and Science Leadership Academy.



Current Condition

Air pollution has improved since the crash, yet the toxins in the water still exist. Much coal ash still remains.

