

Bibliography

Intergovernmental Panel on Climate Change

www.ipcc.ch

"Collapse: How Societies Choose to Fail or Succeed" by Jared Diamond

Globalization 101

http://www.globalization101.org/What_is_Globalization.html

Unity Image

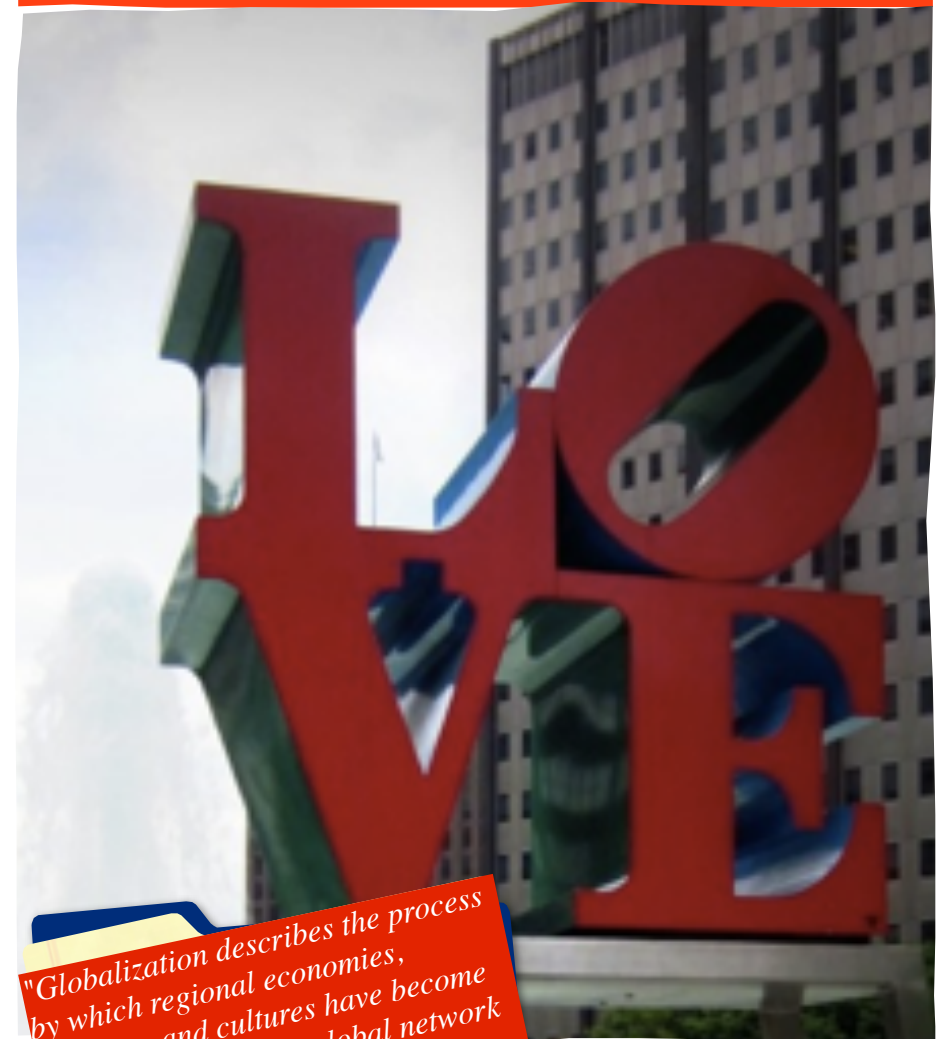
http://www.unitycorps.org/images/unity-art/2004/winter/sonia-jimenez/unity_432x328.jpg

http://en.wikipedia.org/wiki/Chinatown,_Philadelphia

Demographics Of Philadelphia

http://en.wikipedia.org/wiki/Demographics_of_Philadelphia

GLOBALIZATION In PHILADELPHIA



"Globalization describes the process by which regional economies, societies, and cultures have become integrated through a global network of political ideas through communication, transportation, and trade." ~Wikipedia~

Migration

What Makes Us All One?



Migration is when people from different countries and cultures move from their original home to live or reside in another country. Philadelphia is known for its diversity. Philadelphia is divided into neighborhoods such as North, Northeast, South, Southwest, West, and Center City Philadelphia. There are about 1,540,351 people that live in Philadelphia. The racial breakdown of Philadelphia is as follows: 44.2% Black, 39.0% White, 5.4% Asian, 4.7% from other races, 3.2% Mix race, 0.2% Native American, 0.05 Pacific Islander, and 12.5% Hispanic and Latinos. As you see with the breakdown Philadelphia is rich with cultural diversity from all over the world.

As seen in the picture above are flags from different countries. These flags on the Benjamin Franklin Parkway not only represent migration, it also represents globalization in Philadelphia. The flags on the parkway were first displayed in 1976 as part of the city bicentennial celebration. The flags represent the different nationalities of Philadelphia. And this is what globalization is about.

There are 194-195 countries in the world and approximately 6,922,110,023 people that live in those countries. So how do we all communicate? Communication is the key to all human life. We communicate through language. There are about 6,500 spoken languages in the world that is identified, not including technology and so forth. Through globalization we have greater awareness of the cultural differences around the globe. It also gives us great contact with different cultures, with which we have often lived with but never saw or realized before.

Trade



Trade is defined by Dictionary.com as *the act or process of buying, selling or exchanging commodities, at either wholesale or retail, within a country or between countries: domestic trade; foreign trade*. Over the past few decades, trade has become very globalized. Like in the picture above you see four different clothing tags and where they were made. In Philadelphia and all over America we see that all most everything we wear or use is made outside of the U.S. I randomly choose ten pieces of clothing from my closet and read each tag and to my surprise six of them were made in China, one in Paris, one in Vietnam, one in Cambodia, and one in the U.S. It surprises me that a lot of our stuff are made outside of the country.

Trade is a unique method of globalization. The nature of trade is changing dramatically. Thanks to reductions in transportation costs and technology, trade in manufactured goods is progressing. And with the production process being sliced up into different parts like design, component manufacture, assembly and marketing. These different tasks are located in different countries according to their comparative advantage. Things are getting better.

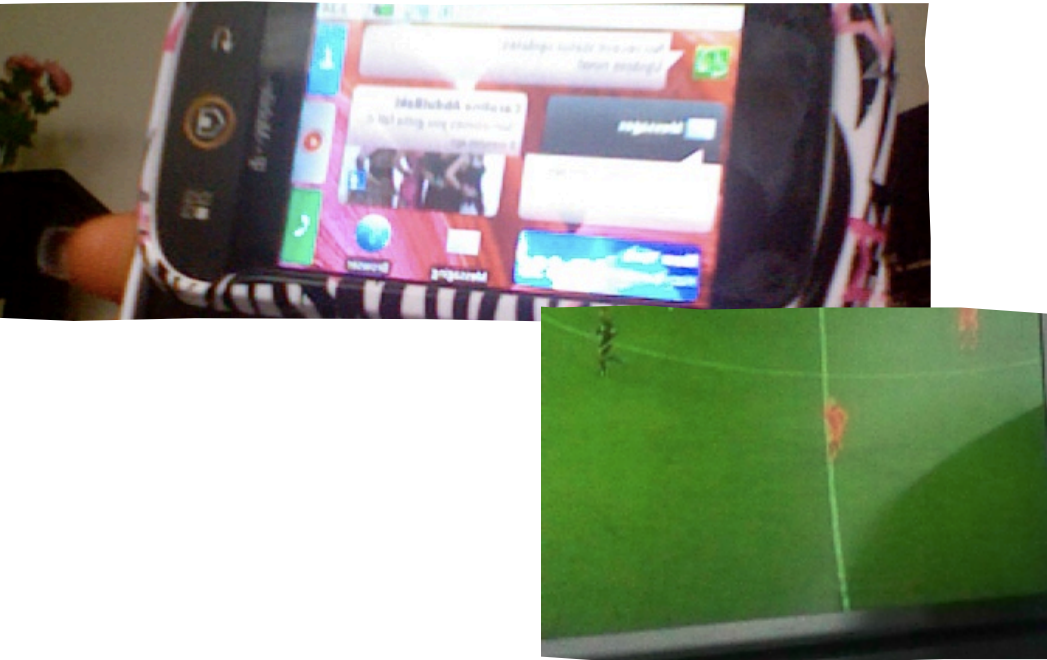
Education



Education as defined by Dictionary.com is *the act or process of imparting or acquiring general knowledge, developing the powers of reasoning and judgment, and generally of preparing oneself or others intellectually for mature life*. The Board of Public Education is responsible for supporting all Philadelphia public early childhood, K-12 secondary, higher education, technical and community educational institutions. They are put in place so that they can manage state and federal funds, make sure all educational standards are met, develop curricula, promote educational excellence and coordinate statewide planning. Education is a key in globalization.

Science Leadership Academy is a great representation of globalization. SLA is very diverse, students come from all over the city to learn. Each student brings with them their cultural background and that influences the way students interact with each other. At SLA students and teachers appreciate the diversity of the school and use it to their advantage. SLA is the best example of education.

Technology



Technology is defined by Dictionary.com as *the branch of knowledge that deals with the creation and use of technical ,means and their interrelation with life, society, and the environment, drawing upon such subjects as industrial arts, engineering, applied science, and pure science*. Technology is one of the key components of globalization. With the advancement of new technology it is easy to connect and communicate with people from all over the world.

The pictures is a smartphone which is also a computer. And the other picture is a image of a TV. With the power of television we are able to view movies and news of other countries. Technology advancement has made life convenient. You can carry a laptop around with you with out even knowing that its on you. The biggest advancement of technology is the internet. With the internet you can be in another country without actually being there now thats globalization.

Culture



Chinatown in Philadelphia is located just north of Center city. The first business ever established in Chinatown was a small Laundromat opened by Lee Fong in 1860. Chinatown later on expanded from being just one small laundromat to now having about 50 Chinese and other Asian restaurants. Although compared to other Chinatown in other U.S cites Philadelphia Chinatown is small it is widely recognized. Chinatown is a great visual example of globalization.

There are also a lot of African immigrants in Philadelphia. And as they come they also bring along with them their culture. Like Chinatown Africans own a lot of store in the philadelphia neighborhoods. They own restaurants, braiding hair shops and so forth. With the mixture of these different countries Philadelphia and the rest of America has a very rich cultural experience.

Environmental

Humans are part of the environment. So when we slowly destroy the environment we are slowly destroying ourselves. globalization has its pros and cons. Most of the time as countries globalize and develop, the environment gets worse. As developing countries progresses it usually advances from an agricultural bases economy to a manufacturing based economy which ends up harming the environment.

Everywhere you turn you hear someone talk about global warming and environmental issues. But what are they really doing to prevent this from happening? Philadelphia and other cities are taking measures to help the environment. These trash cans as seen below are being placed on the corner of streets of neighborhoods. Whats so good about these new cans you may ask? These are naturally powered by the sun. When the sun reaches the top of the can it compacts the trash within the can and leaves space for more trash. This is good because the trash wont spill over and the trash doesn't need to be picked up frequently.



Security



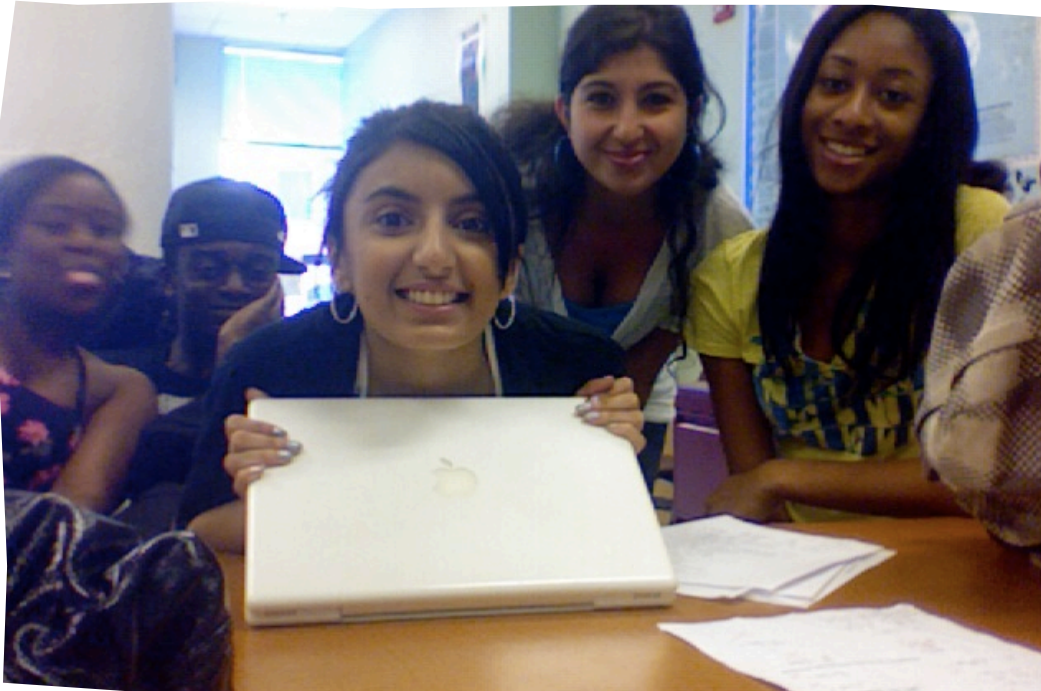
Dictionary.com defined security as *freedom from danger, and risk, etc.,; safety.* At 30th street there are signs that tells the passengers about the cameras. This is good because if something happens you can tell who did it by reviewing the tape. You can even the security cameras to prevent things from happening before it even happens.

Ever since 911 security has been tight everywhere in america. Philadelphia has up its security everywhere. At the airport, train station, bus terminal, etc. Citizens can now travel feeling safe.

Society

In society people group together to form a society. To be in a society you surrender some of your individual freedoms from nature to be part of everyone. Although in most society you benefit and have greater security and a sense of belonging. Through society you can solve common and collective problems.

This is why people have at least two identities, our identity as an individual and as a member of a particular society. At SLA we are in our own society.



Health



On May 21 1881 The America Red Cross was founded in Washington, D.C by Clara Barton and a circle of her acquaintances. She got the inspired by the Swiss-inspired international Red Cross. From then on the has been helping in need all over the world.The Red Cross is a unique organization that is respected all over the world.

The Red Cross is known for its reputation for helping people in need. They help people that are affected by catastrophic events all over the world.

Reflection

The most challenging part of this benchmark for me was collecting all the pictures for each topic. I found this project difficult because categorizing each topic with globalization seem like each could be represented differently. And all the pictures had to be taken in Philadelphia to show how globalization has happen over time or is still happening. As I travel around Philadelphia taking pictures I started to see that globalization was easily seen in some communities that others. In the end I really enjoy this project because I'm able to walk around the city and see it in another light then I have before.

Energy



Energy has a huge impact on the environment. Energy is use a lot for all sources of things. We use energy in our homes for heating, cooling, lighting, and other powering electronics such as your computer, TV etc. Energy is also used in the industry, transportation and other commercial buildings.

A lot of money is spent on gas everyday. Gas price has gone so high that people are turning to public transportation.